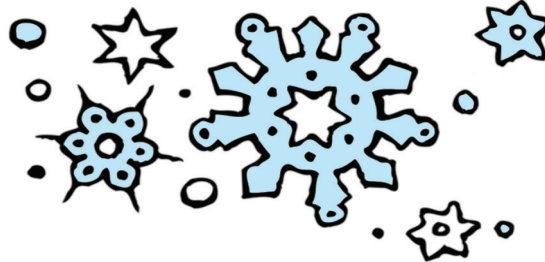


**"Be sure to schedule a meeting time to see  
your favorite lines of merchandise!"**



# **The Shipshewana Fabric Show**

Shipshewana, Indiana

*\* This is a "Wholesale Only" show and not open to the general public. \**

**Tuesday, February 17, 2015**

**9:00 a.m. to 5:00 p.m.**

*Please note this event is being held on a Tuesday!*



You are cordially invited to attend our show at the



**Farmstead Inn  
& Conference Center**

370 South Van Buren Street (Indiana Route 5) · Shipshewana, Indiana 46565 · (260) 768-4595

**Come see all the new Fall and  
Holiday Fabrics for 2015!**

LOCAL LODGING AVAILABLE: [www.shipshewana.com/lodgings.php](http://www.shipshewana.com/lodgings.php)

REGISTRATION IS DAY OF SHOW - NO ADVANCE RESERVATIONS REQUIRED

**"Serving The Amish, Quilt Shops, Fabric Stores, Sewing Centers,  
and Independent Businesses"**

#### **AREA ATTRACTIONS:**

- Across the street from the largest Flea Market in the Midwest
- Beautiful Amish Countryside and a unique slower pace of life
- One of the largest Amish Settlements in the United States
- Within 3 hours of Detroit, Indianapolis, and Chicago
- Next door - Trading Place Antique Gallery - over 100 quality dealers
- Within walking distance of Menno-Hof Culture Center
- 90 plus specialty stores - great dining options - family entertainment
- Home of Davis Mercantile - Yoder Department Store - Lolly's Fabrics



Welcome to Shipshewana and Northern Indiana!

Registration is day of show. No advance reservations required. For more information  
and scheduled participating vendors, please contact us at [IndianaFabShow@aol.com](mailto:IndianaFabShow@aol.com).

This is a wholesale only event. Minimum orders (company by company) may apply.

